



Copyright © 2007 Monica Brown

This double breasted cropped cardigan is close-fitting.

Sizes

- XS, S, M, and L
- Finished Bust: 31 (35, 39, 43)" / 77.5 (87.5, 97.5, 107.5)cm
- Finished Total Length: 14 (14.5, 15, 15.5)" / 35 (36.3, 37.5, 38.8)cm

Materials

- Classic Elite, Premiere, 50% Cotton/50% Tencel, 108yd / 100m per 50 g
- Color -#5276 Cocoa Bean, 10 (11, 12, 13) skeins
- US E/4 (3.5mm) & US F/5 (3.75mm) crochet hooks or size needed to obtain gauge
- 4–1.0" (2.5cm) Buttons
- 6–Size 2 Sew-On Snaps

the gauge swatch

Crochet Abbreviations

hdc = half double crochet
pm = place marker
sc = single crochet
skp = skip
sl st = slip st
tch = turning chain

Gauge

In hdc: 4.5 sts and 4 rows = 1"/2.5cm with smaller hook

In Solid Shell St: 1 shell and 2 rows = 1.125"/2.8 cm with larger hook

Solid Shell Stitch Pattern (multiple of 6 + 1)

Row 1: Ch 1, sc in first st, *skp 2 sts, 5 dc into next st, skp 2 sts, 1 sc in next st; rep from * to end, turn.

Row 2: Ch 3, 2 dc in 1st, *skp 2 dc, 1 sc in next dc, skp 2 dc, 5 dc in next st; rep from * ending with 3 dc in final sc, skp tch, turn.

Row 3: 1 ch, 1 sc in 1st, *skp 2 dc, 5 dc in next sc, skp 2dc, 1 sc in next dc; rep from * ending with 1 sc in top of tch,

Rep Rows 2 and 3 for pattern st.

from the top...

This cardigan is an easy top down project. The cardigan begins at the neck and is worked back and forth in half double crochet until reaching the underarms. On every row the yoke of the cardigan is increased along raglan lines.

Markers are placed in 4 sts to designate the locations for the raglan increases. Prior to the first marker is the front. Between the 1st and 2nd marker is the first sleeve, between the 2nd and 3rd marker is the back, and between the 3rd and 4th marker is the second sleeve. After the final marker is the other front.

The increases are worked by placing 3 hdc in the marked stitch, creating a 3 hdc shell.

The body and sleeves are worked separately in the solid shell st pattern. The body and sleeves are worked back and forth until the desired length is reached.

Note: The turning chain does not count as a stitch in this pattern.

neck edge

With smaller hook, ch 115 (125, 135, 145).

Row 1 (RS): Hdc in 2nd ch from hook, hdc in each st across, turn. 114 (124, 134, 144) hdc

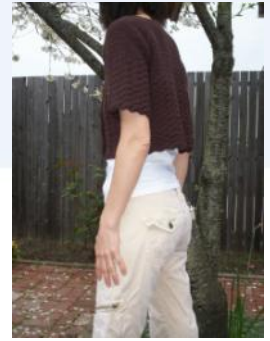
Place marker on every row in 2nd hdc of 3 hdc shell when working raglan increase rows.

Set-up Row for Raglan Increases

Row 2 (WS): Ch 2, hdc in each of the first 27 (29, 33, 35) sts, work 3 hdc in next st and pm, hdc in next 11 (13, 13, 15) sts, work 3 hdc in next st and pm, hdc in next 34 (36, 38, 40) sts, work 3 hdc and pm, hdc in next 11 (13, 13, 15) sts, work 3 hdc and pm, hdc in remaining 27 (29, 33, 35)

sts, turn. 122 (132, 142, 152) hdc

Repeat Row 2, 17 (21, 24, 28) more times increasing 8 sts each row. Ending with 258 (300, 334, 376) hdc.



Side and Back

After the hdc yoke is completed, it is easy to lengthen or shorten the sleeves and bodice just work more or less rows.

body

Next RS Row: Ch 2, hdc in each st to one st before first marker, hdc2tog this st with 1st st after 2nd marker, hdc across back to one st before 3rd marker, hdc2tog this st with 1st st after 4th marker, hdc in each st across front, turn. 158 (180, 202, 224) hdc

Leave 49 (59, 65, 75) sts for each sleeve untouched. Skipped sts will form the sleeves.

Size XS Only

Next WS row: Ch 2, hdc in the first 9 sts, *2 hdc in next st, hdc in next 4 sts, rep from * 28 more times, hdc across remaining sts, turn. 187 hdc

Size S Only

Next WS Row: Ch 2, hdc in first 14 sts, *2 hdc in

next st, hdc in next 4 sts, rep from * 30 more times, hdc across remaining sts, turn. 211 hdc

Size M Only

Next WS Row: Ch 2, hdc in first 4 sts, *2 hdc in next st, hdc in next 4 sts, rep from * 38 more times, hdc across remaining sts, turn. 241 hdc

Size L Only

Next WS Row: Ch 2, hdc in first 14 sts, *2 hdc in next st, hdc in next 5 sts, rep from * 34 more times, hdc across remaining sts, turn. 259 hdc

Change to larger hook and begin solid shell st patt. Work in shell st patt until garment measures 14 (14.5, 15, 15.5)" / 35 (36.25, 37.5, 38.75)cm from neck edge or desired length.

sleeves

With smaller hook, sl st in the bottom right corner at the underarm to begin sleeves on RS. **Sleeves are worked back and forth.**

Size XS Only

Next RS Row: Ch 2, hdc in first 7 sts, *2 hdc in next st, hdc in next 7 st, rep from * 5 more times, hdc across remaining sts, turn. 55 hdc

Size S Only

Next RS Row: Ch 2, hdc in first 7 sts, *2 hdc in next st, hdc in next 6 sts, rep from * 7 more times, hdc across remaining sts, turn. 67 hdc

Size M Only: Ch 2, hdc in first 3 sts, 2 hdc next st, *hdc in next 4 hdc, 2 hdc in next st, rep from * 11 more times, hdc across remaining sts, turn. 79 hdc

Size L Only: Ch 2, hdc in first 7 sts, *2 hdc next st, hdc in next 3 hdc, rep from * 15 more times, hdc across remaining sts, turn. 91 hdc

Change to larger hook and begin solid shell st patt. Work in shell st patt until garment measures 5.5 (6.0, 6.5, 7.0)" / 13.8 (15, 16.3, 17.5) cm from underarm or desired length.

Pattern Stitches



finishing

Edging

With RS facing, sl st in right front corner at the bottom edge, work one row of hdc to neck edge.

Rep for left front edge.

Sew sleeves seams.

Weave in ends.

Buttons and Snaps

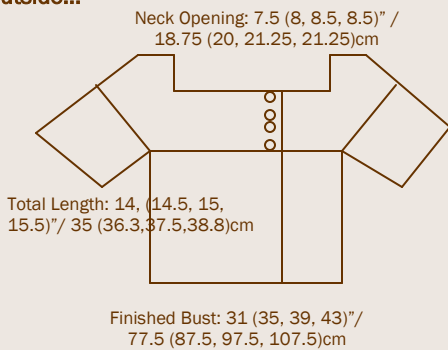
The buttons are just for decorative purposes, while the snaps secure the fronts of the cardigan (on the inside).

On RS, position four button as desired along right edge of hdc yoke. Sew buttons on cardigan.

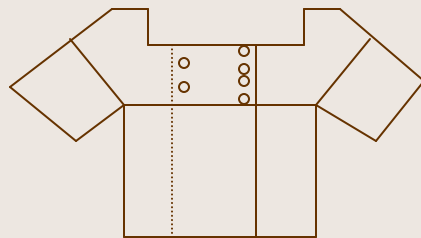
On WS, position snaps to line up with buttons, and sew on inside. Use the remaining two snaps to secure fronts at inside left edge. See diagram below for snap placement.

The scheme of things...

Outside...



Inside...



See above diagram for placement of snaps. Dotted line indicates inside flap.

This double breasted cardigan includes approximately 4.5 (5.0, 6.0, 6.5) / 11.25 (12.5, 15, 16.25)cm of overlap in the front.

more information...

alternative yarn options

The following yarns may also work for this cardigan:

- Rowan Calmer
- Rowan Cotton Glace
- Cascade Yarns Cascade 220

contact information

contact monica BROWN via e-mail at monicawellebrown@comcast.net.

find more patterns at <http://www.m1designs.typepad.com>

Crop Cardigan

